



Reflex Level Gauge LG40-CS

Application and Function

The Reflex Level Gauge is a direct water level indicator mainly used for steam boilers and/or pressure vessel. The unique Design of the glass reflects the water column gloomy and the steam range bright.

This product is in accordance with EU-directive 2014/68/EU. Applied policy acc. to DIN EN 13445 and ASME Boiler and Pressure Vessel Code. Considered regulations AD2000. Furthermore, as a plant component for large water room boilers and water tube boilers, this product meets the requirements of the standards DIN EN 12952-7 and DIN EN 12953-6.

Technical Basic Equipment

- Main Body in Carbon Steel
- Freely selectable valve connection orientation
- Shut-off Valve A120-CS with process connection DN20 or DN25
- With drain Valve AV250 and Vent Plug G½"
- Sight Glass acc. to DIN 7081

Options

- Shut-off Valve A140-CS for customized process connections
- Main Body in stainless steel
- Double shut-off valve
- Customer-specific drain connection
- Customer-specific viewing lengths
- Inclined design

Technical Data

Permissible pressure	PS [bar]	32
	PS [psi]	464
Permissible temperature	TS [°C]	239
	TS [°F]	462
Ambient temperatures	Min [°C]	-10
	Max [°C]	239
	Min [°F]	14
	Max [°F]	462
Shut-off Valve	Type	A120-CS
Drain Valve	Type	AV250



Single Sight Length

	Size	Visible Lengths (Dimension E)	Process connection length (Dimension A)		Article Number ¹⁾
			Min.	Max.	
1	2	120	180	320	15-13877
2	3	145	205	345	15-13878
3	4	170	230	370	15-13879
4	5	200	260	400	15-13880
5	6	230	290	430	15-13881
6	7	260	320	460	15-13882
7	8	300	360	500	15-13883
8	9	320	380	520	15-13884
9	10	350	410	550	15-13885

* Other Dimension on request

1) Article Number without shut-off & drain valve



Multiple Stacked Sight Lengths

	Size	Schauglas- öffnungen	Visible Lengths (Dimension E)	Process connection length (Dimension A)		Article Number ¹⁾
				Min.	Max.	
1	6	2	486	544	724	15-13901
2	9	2	666	724	904	15-13903
3	7	3	832	890	1070	15-13904
4	9	3	1012	1070	1250	15-13905
5	10	3	1102	1160	1340	15-13906
6	8	4	1278	1336	1516	15-13907
7	7	5	1404	1462	1642	15-13908
8	10	4	1478	1536	1716	15-13909
9	8	5	1604	1662	1842	15-13910
10	6	7	1766	1824	2004	15-13911
11	8	6	1930	1988	2168	15-13912
12	9	6	2050	2108	2288	15-13913
13	10	6	2230	2288	2486	15-13914
14	9	7	2396	2454	2634	15-13915
15	7	9	2548	2606	2786	15-13916
16	10	7	2606	2664	2844	15-13917

* Other Dimension on request

1) Article Number without shut-off & drain valve



Single Sight Length

	Size	Visible Lengths (Dimension E)	Process connection length (Dimension A)		Article Number ¹⁾
			Min.	Max.	
1	2	4 ⁵ / ₇ "	7 "	12 ³ / ₅ "	15-13877
2	3	5 ⁵ / ₇ "	8 "	13 ⁴ / ₇ "	15-13878
3	4	6 ² / ₃ "	9 "	14 ⁴ / ₇ "	15-13879
4	5	7 ⁷ / ₈ "	10 ¹ / ₄ "	15 ³ / ₄ "	15-13880
5	6	9 "	11 ³ / ₇ "	17 "	15-13881
6	7	10 ¹ / ₄ "	12 ³ / ₅ "	18 ¹ / ₉ "	15-13882
7	8	11 ⁴ / ₅ "	14 ¹ / ₆ "	19 ² / ₃ "	15-13883
8	9	12 ³ / ₅ "	15 "	20 ¹ / ₂ "	15-13884
9	10	13 ⁷ / ₉ "	16 ¹ / ₇ "	21 ² / ₃ "	15-13885

* Other Dimension on request

1) Article Number without shut-off & drain valve



Multiple Stacked Sight Lengths

	Size	Sight glass openings	Visible Lengths (Dimension E)	Process connection length (Dimension A)		Article Number ¹⁾
				Min.	Max.	
1	6	2	19 ¹ / ₇ "	21 ³ / ₇ "	28 ¹ / ₂ "	15-13901
2	9	2	26 ² / ₉ "	28 ¹ / ₂ "	35 ³ / ₅ "	15-13903
3	7	3	32 ³ / ₄ "	35 "	42 ¹ / ₈ "	15-13904
4	9	3	39 ⁵ / ₆ "	42 ¹ / ₈ "	49 ¹ / ₅ "	15-13905
5	10	3	43 ² / ₅ "	45 ² / ₃ "	52 ³ / ₄ "	15-13906
6	8	4	50 ¹ / ₃ "	52 ³ / ₅ "	59 ² / ₃ "	15-13907
7	7	5	55 ² / ₇ "	57 ⁵ / ₉ "	64 ² / ₃ "	15-13908
8	10	4	58 ¹ / ₅ "	60 ¹ / ₂ "	67 ⁵ / ₉ "	15-13909
9	8	5	63 ¹ / ₇ "	65 ³ / ₇ "	72 ¹ / ₂ "	15-13910
10	6	7	69 ¹ / ₂ "	71 ⁴ / ₅ "	78 ⁸ / ₉ "	15-13911
11	8	6	76 "	78 ¹ / ₄ "	85 ¹ / ₃ "	15-13912
12	9	6	80 ⁵ / ₇ "	83 "	90 "	15-13913
13	10	6	87 ⁴ / ₅ "	90 "	97 ⁷ / ₈ "	15-13914
14	9	7	94 ¹ / ₃ "	96 ³ / ₅ "	103 ⁵ / ₇ "	15-13915
15	7	9	100 ¹ / ₃ "	102 ³ / ₅ "	109 ² / ₃ "	15-13916
16	10	7	102 ³ / ₅ "	104 ⁷ / ₈ "	112 "	15-13917

In the case of the one on top of the other, there is a dead space of 1" between the individual viewing lengths.

* Other Dimension on request

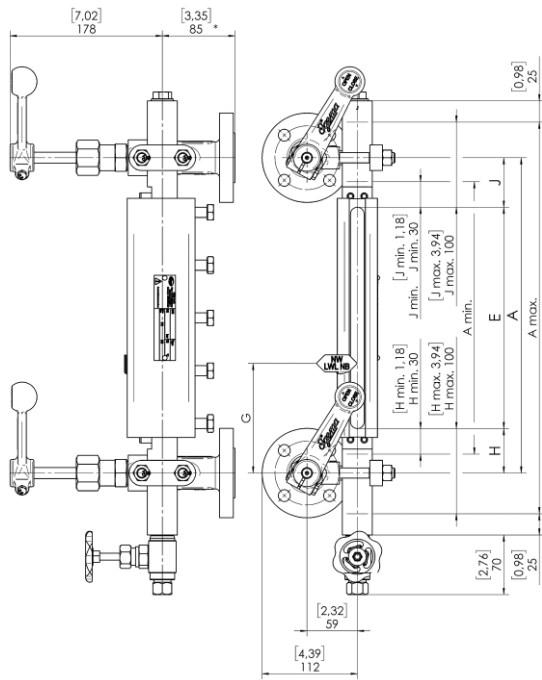
1) Article Number without shut-off & drain valve

**Note!**

For level indicators weighing 30 kilograms or more, the customer must provide for a sufficient support (e.g. by means of spring hangers or similar).

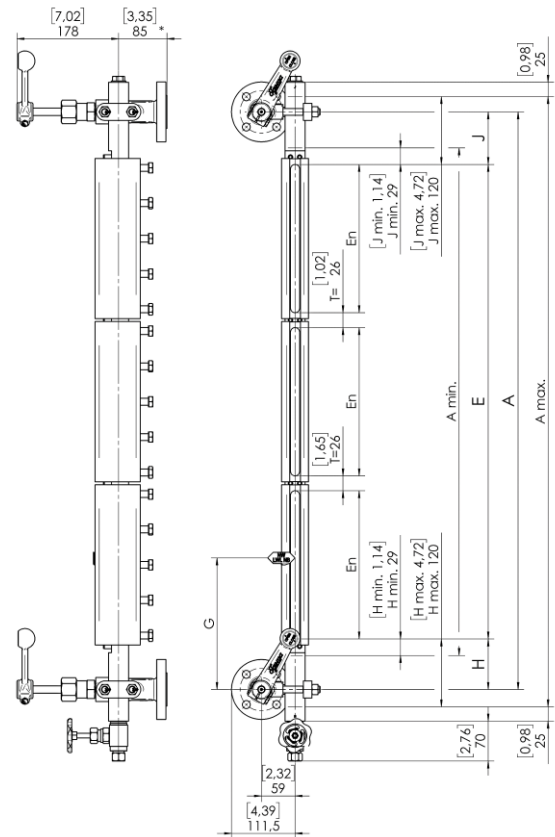
Single Sight Length

Shown as left-handed model



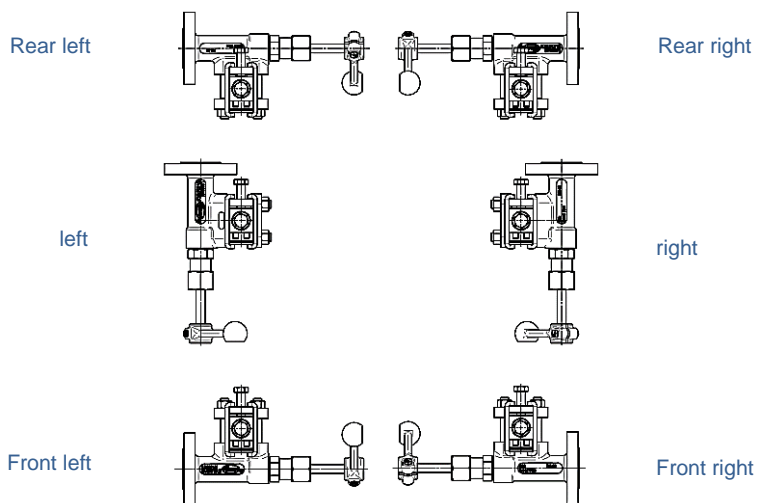
Multiple Stacked Sight Length

Shown as left-handed model



* Dimension differs with shut-off valve A140-CS.

Possible vent connection



Equipment

Illustrated Reflex Level Gauges are equipped with Shut-Off Valve A120-CS and Drain Valve AV250.



A120-CS Shut Off Valve
Article Number: 15-12656-DN20/PN40
Article Number: 15-10773-DN25/PN40



AV250 Drain Valve
Article Number: 40-11390

Accessory

Description	Marking	Article-No.
Water Level Mark	NW-LWL-NB	25-13645
Water Level Mark	HHWL	25-13717
Water Level Mark	HWCO	25-13697
Water Level Mark	HWL	25-13716
Water Level Mark	NWL	25-13698
Water Level Mark	LWL	25-13718
Water Level Mark	LWCO	25-13699
Water Level Mark	LLWL	25-13719

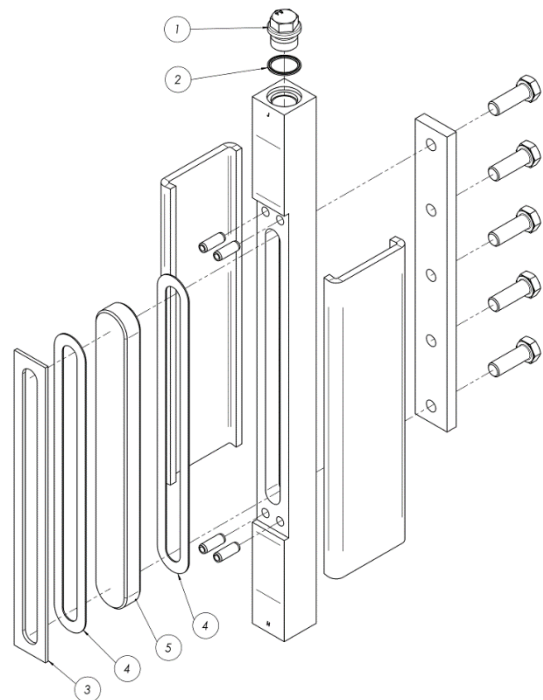
Water Level Mark - NWL



For each water level mark, two semi-circular grooved pins are required for fastening. Article-No.: 40-00634.

Spare parts

Pos.-No.	Description	Size	Article-No.	Quantity
1	Vent Plug G ½"	-	40-00329	1
2	Seal Ring 21 x 26 x 1,5 mm	-	40-00099	1
3	Pressure Plate	2	40-00422	nx1
3	Pressure Plate	3	40-00423	nx1
3	Pressure Plate	4	40-00424	nx1
3	Pressure Plate	5	40-00425	nx1
3	Pressure Plate	6	40-00426	nx1
3	Pressure Plate	7	40-00427	nx1
3	Pressure Plate	8	40-00428	nx1
3	Pressure Plate	9	40-00429	nx1
3	Pressure Plate	10	40-00430	nx1
4-5	Spare Part Set	2	15-13051	nx1
4-5	Spare Part Set	3	15-13058	nx1
4-5	Spare Part Set	4	15-13059	nx1
4-5	Spare Part Set	5	15-13060	nx1
4-5	Spare Part Set	6	15-13061	nx1
4-5	Spare Part Set	7	15-13062	nx1
4-5	Spare Part Set	8	15-13063	nx1
4-5	Spare Part Set	9	15-13064	nx1
4-5	Spare Part Set	10	15-13065	nx1



Spare Part Set consisting of 2x Sealing and 1x Reflex glass
n = Number of Sight Length

